

ELECTRICAL

MOTOR TYPE	SEPARATELY EXCITED SHUNT WOUND		
NOMINAL VOLTAGE	36 DC		
VOLTAGE COMPENSATION	V - 37 %	AMPS	Q15
FIELD ARRANGEMENT	EXTERNAL CONNECTIONS-SEE WIRING DIAGRAM		
FIELD CONFIGURATION	SHUNT		
TIME RATING	MIN/HR		
INSULATION CLASS	H REF. TEST CURVE: C-54		
DIELECTRIC WITHSTAND VOLTAGE	DESIGN TO MEET PARA 20 OF UL-583		
THERMAL RATING	C 100		
TEST DUTY CYCLE PROFILE	(RUN CONTINUOUSLY)		

	RPM	LB-FT	AMPS	MIN/HR DUTY CYCLE
NO LOAD	3087	4.6		18
MAX LOAD	2756	7.1		18
MAX RAMP	1000	53.7		4

SPEED TOLERANCE ± % OVER OPERATING RANGE

DIRECTIONAL TOLERANCE ON SPEED ± % 5

EXPECTED BRUSH LIFE HOURS 2000

RATED HORSEPOWER HP AT RPM & AMP

TIME RATING MINUTES (FREE STILL AIR)

CONTINUOUS DUTY: HP 7.5 RPM, lbft 2060, 19.0

la If 220, 11.5

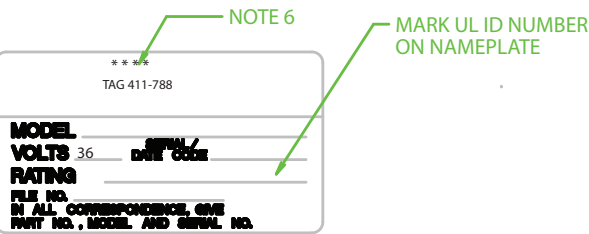
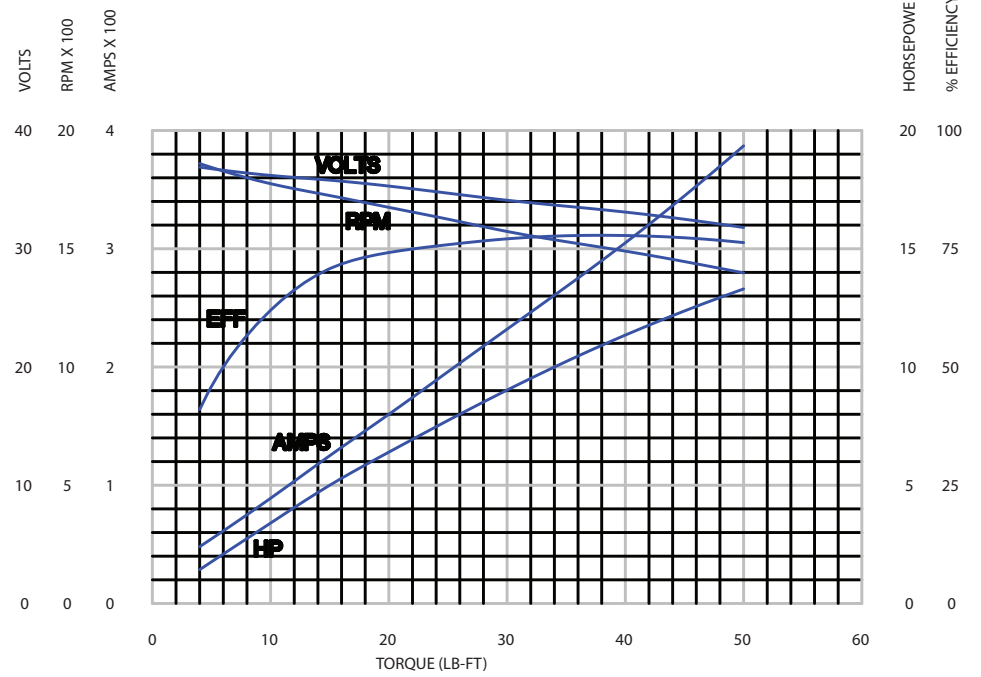
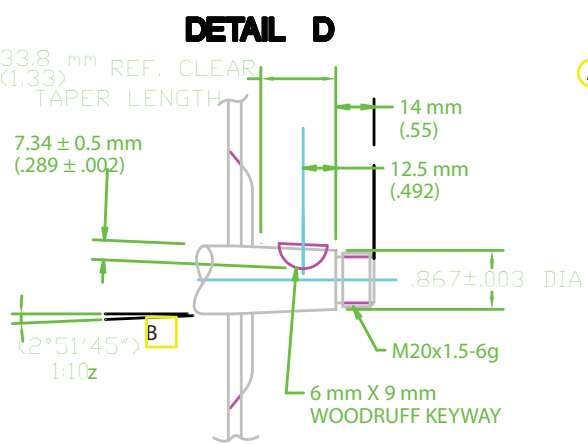
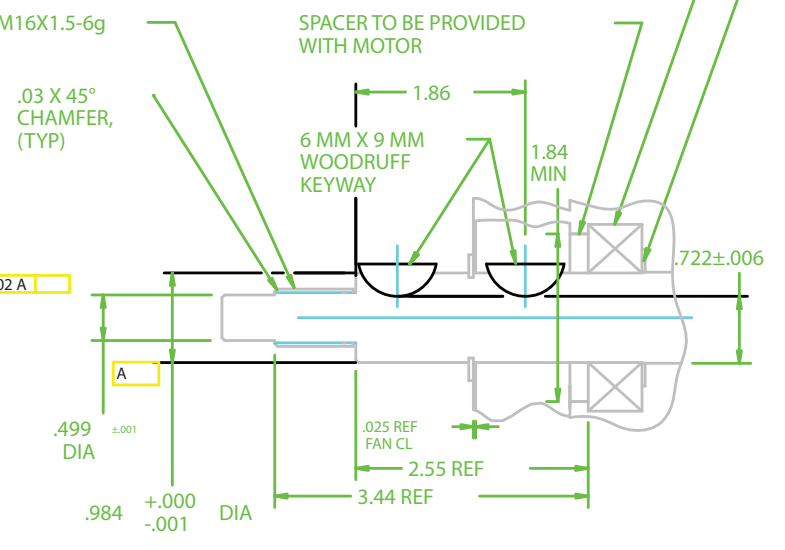
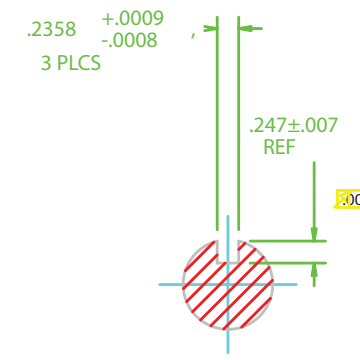
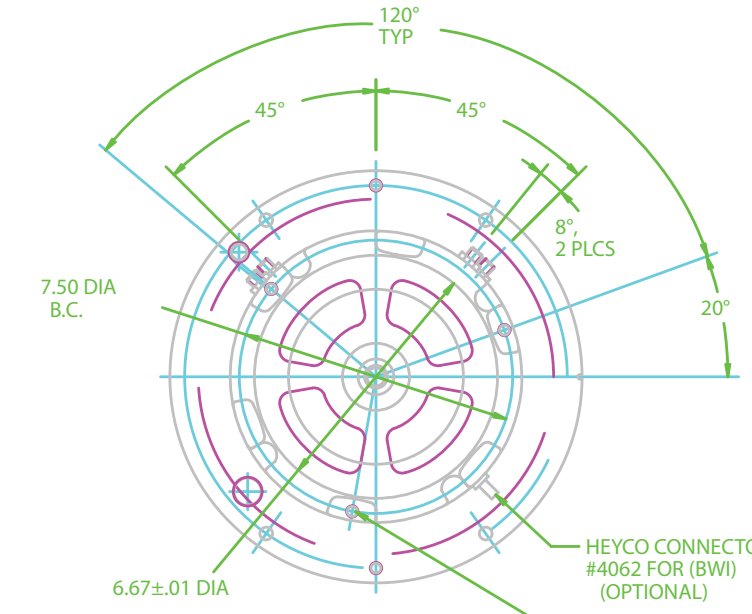
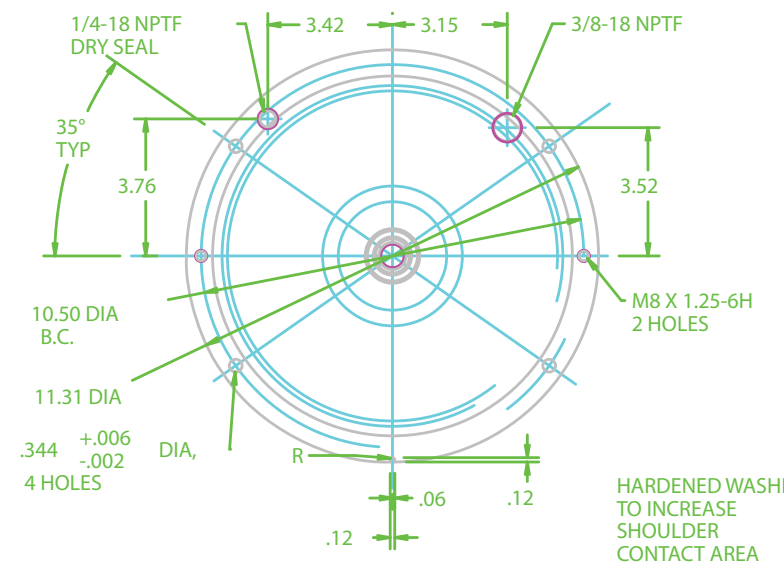
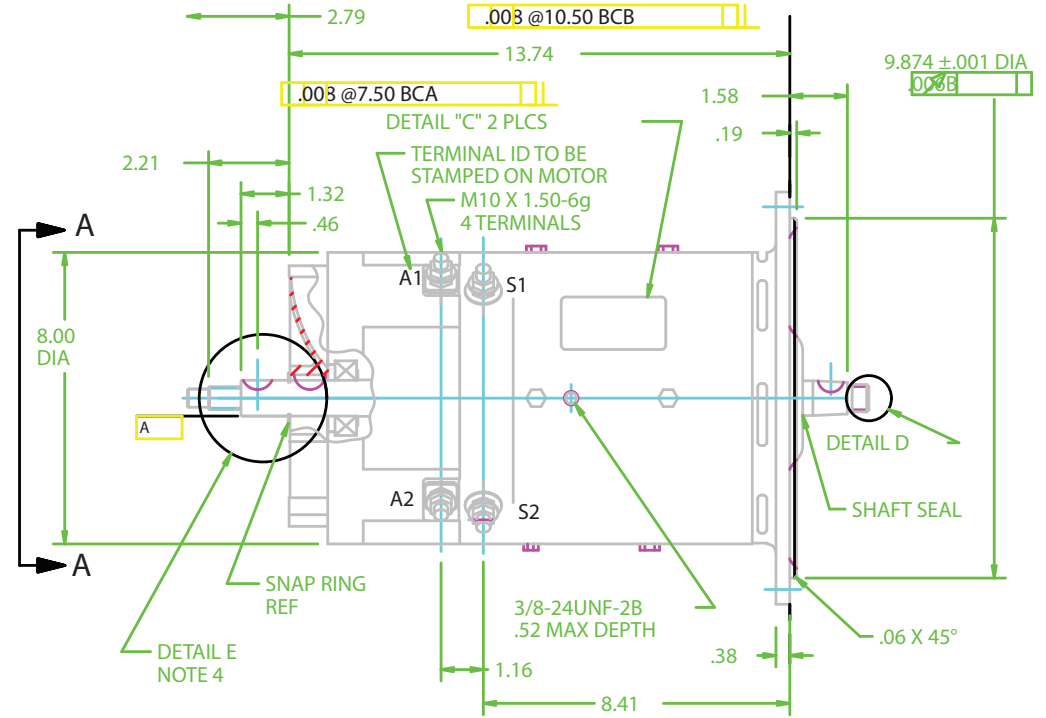
MOTOR CURVE TEST CONDITIONS:

ARMATURE: 37.5 - .015 * (la + If) VOLTS

FIELD: 13.0 AMPS

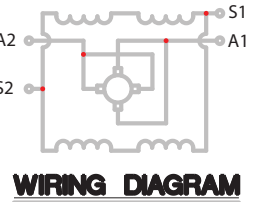
MECHANICAL

REF OUTLINE DRAWING NO	203-02-4004		
MOUNTING DESCRIPTION	4 BOLT		
SHAFT DESCR	DOUBLE ENDED		
TERMINALS NO	4		
SHAFT SEALS	AS NOTED		
VENTILATION	EXTERNAL FAN		
ROTATION (VIEWED FROM DRIVE END)	REVERSIBLE		
LL CLASSIFICATION TYPE(S)	E AND EE		
LL ENCLOSURE KIT	REQUIRED		
BRUSH GRADE & TYPE	MORGANITE CM-880 A12D		
BRUSH ACCESS BY	ACCESS HOLES ON MOTOR SIDE		
BRUSH QTY:	8		
BRUSH GRADE:	H-100 (MORGANITE) CURVED		
BRUSH SIZE:	.967 X .626		
MINIMUM BRUSH LENGTH	.62		
MINIMUM COMMUTATOR DIAMETER	2.80		
SPACING BRUSH BOX TO FRAME	.25 INCH MIN		
NUMBER OF POLES	4		
ARMATURE BALANCE	QUENCH		
MOTOR BALANCE	1/8" EXCURSION		
PAINT	FRAME BLACK ENAMEL END HEADS		
	NATURAL ALUMINUM		
DATE CODE	FRAME AND ARMATURE REQUIRED		
ATTACHMENTS (DESCRIBE E.G. TACH, PUMP, BRAKE, FAN, ETC)			
TACH & BRAKE ON STRAIGHT SHAFT END			
TRANSMISSION GEAR BOX ON TAPERED END			
FIELD RES:	ohms, FIELD TURNS:	165	
ARM. RES:	ohms, ARM. PATHS:	2	
SPRING TENSION:	65oz NEW 40oz WORN		



ROTATED 90° CCW

ROTATION TABLE	
C.W.D.E.	CONNECT A1, S1 TO ONE BATT TERM
C.W.D.E.	CONNECT A2, S2 TO OTHER BATT TERM
C.C.W.D.E.	CONNECT A1, S2 TO ONE BATT TERM
C.C.W.D.E.	CONNECT A2, S1 TO OTHER BATT TERM



- BRASS NUTS AND BRONZE LOCKWASHERS ARE REQUIRED ON TERMINALS.
- MOTOR TO BE SHIPPED WITH FAN & SPACER HELD BY SNAP RING. FOR "E" CONFIGURATION FAN BLADES TOWARD ARMATURE.
- ARMATURE TO BE LOCATED BY POSITIVE RETENTION OF BEARING AT COMMUTATOR END.
- RESISTANCE IS AT ROOM TEMPERATURE (20°C). TOLERANCE IS ±5%
- OUTLINE DIMENSIONS ARE NOMINAL UNLESS TOLERANCES ARE SPECIFIED.

6. MANUFACTURER TO IDENTIFY RAYMOND P/N ON TAG WITH 4 DIGIT IDENTIFIER SUCH THAT THE FIRST THREE DIGITS ARE THE NUMBERS FOLLOWING "570-", AND THE LAST DIGIT IS THE FINAL NUMBER IN THE SLASH SUFFIX, IE P/N 570-316/501 WOULD HAVE IDENTIFIER 31